

Nipro Renal Care is part of Nipro Corporation Japan, a leading global healthcare company established in 1954. With over 28,000 employees worldwide, Nipro serves the Medical Device, Pharmaceutical, and Pharmaceutical Packaging industries.

Nipro Renal Care is a global market leader with over 5 decades providing renal solutions for dialysis and dialysis-related treatment. We specialize in developing dialysis machines, water treatment systems, and a comprehensive portfolio of disposable medical equipment.

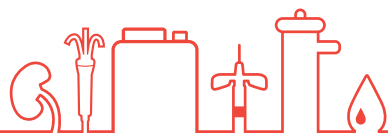
In order to address the needs of patients, healthcare professionals, and procurement managers alike, Nipro Renal Care is driven by innovation and patient safety to offer the highest quality products that optimize time, effort, and costs.

BECAUSE EVERY LIFE DESERVES AFFORDABLE CARE

Products are continuously under review in the light of technical advancement; the actual specifications may therefore be subject to improvement or modification without notice. Some features and/or accessories displayed and described could be optional on different markets. The information provided does not constitute an offer to sell and is provided for merely information purposes. Images published in the present document are shown exclusively for demo purposes, are representative of the possible applications and might be adapted for specific needs. All rights reserved.



RENAL CARE



Nipro Medical Europe : European Headquarters, Blokhuisstraat 42, 2800 Mechelen, Belgium
T: +32 (0)15 263 500 | F: +32 (0)15 263 510 | medical@nipro-group.com | www.nipro-group.com

Please contact your local representative for more information.

- NIPRO MEDICAL AUSTRIA GMBH :**
Divischgasse 4, 1210 Wien, AUSTRIA | T: +43 1 532 23 14 | F: +43 1 532 23 14 89
- NIPRO EUROPE - EGYPT :**
Nile City Towers, 22nd Floor, North Tower, Nile City, Towers, Cornich El Nile, 11624 Ramelt Beaulac, Cairo, EGYPT
- NIPRO MEDICAL FRANCE S.A. :**
Biopôle Clermont-Limagne, 63360 Saint Beauzire, FRANCE | T: +33 (0)473 33 41 00 | F: +33 (0)473 33 41 09
- NIPRO MEDICAL GERMANY GMBH :**
Kokkolastrasse 5, 40882 Ratingen, GERMANY | T: +49 (0)2102 564 60 81 | F: +49 (0)2102 564 60 90
- NIPRO MEDICAL EUROPE NV - ITALY :**
Centro Direzionale Milanofiori, Strada 1 - Palazzo F1, 20090 Assago (Milano), ITALY | T: +39 (0)2 57 50 00 57 | F: +39 (0)2 57 51 81 11
- NIPRO MEDICAL EUROPE NV - NETHERLANDS :**
Verfengde Poolseweg 16, 4818 CL Breda, NETHERLANDS | T: +31 (0)76 524 50 99 | F: +31 (0)76 524 46 66
- NIPRO MEDICAL NIGERIA LTD. :**
9 Adetabu Close, Off Toyin Street, 100271 Ikeja, Lagos State, NIGERIA | T: +234 (0)802 706 7065
- NIPRO EUROPE - POLAND :**
UL. Panska 73, 00-834 Warszawa, POLAND | T: +48 (0)22 31 47 155 | F: +48 (0)22 31 47 152
- NIPRO EUROPE - PORTUGAL :**
Avd. Da Liberdade 249, 1º Andar, 1205-143 Lisboa, PORTUGAL | T: +34 (0)91 878 29 21 | F: +34 (0)91 878 28 40

- NIPRO MEDICAL EUROPE - RUSSIAN REPRESENTATIVE OFFICE :**
12 Krasnopresnenskaya Nab., Office 1407, entrance 6, 123610 Moscow, RUSSIA | T: +7 (0)495 258 1364 | F: +7 (0)495 258 1365
- NIPRO MEDICAL SENEGAL S.U.A.R.L. :**
27 Avenue Georges Pompidou, Dakar, SENEGAL
- NIPRO MEDICAL D.O.O. BEOGRAD :**
Bastovanska 68a, 11000 Belgrade, SERBIA | T: +381 (0)11 75 15 578
- NIPRO MEDICAL SOUTH AFRICA (PTY) LTD :**
48 Dwyka Street, Stikland Industria, Cape Town, 7530, SOUTH AFRICA | T: +27 21 949-2635 | F: +27 21 949-2397
- Unit 20&21, Falcon Lane, Lanseria Business Park, Erf 805 Lanseria Corporate Estate, Pelindaba Rd., Lanseria Ext. 26, Gauteng, SOUTH AFRICA | T: +27 11 431 1114 / 26 | F: +27 11 431 1115
- NIPRO MEDICAL EUROPE NV - SPAIN :**
Poligono Los Frailes nº 93 y 94, Daganzo, 28814 Madrid, SPAIN | T: +34 (0)91 884 5531 | F: +34 (0)91 878 2840
- NIPRO MEDICAL SAG.HIZ.TIC.LTD.SHI. :**
Aziziyeh Mah.Pilot Sok.17/4, 6540 Çankaya-Ankara, TURKEY | T: +90 (0)312 442 21 12 | F: +90 (0)312 442 21 92
- NIPRO MEDICAL UK LTD. :**
25 Barnes Wallis Road, Segensworth East, Fareham Hampshire PO15 5TT, UNITED KINGDOM | T: +44 148 985 48 30

Bro-Surdial_55Plus - EN - 19.Nov.18



SURDIAL™ 55PLUS

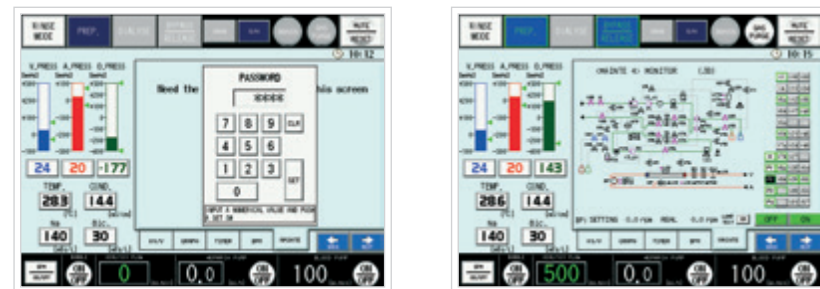
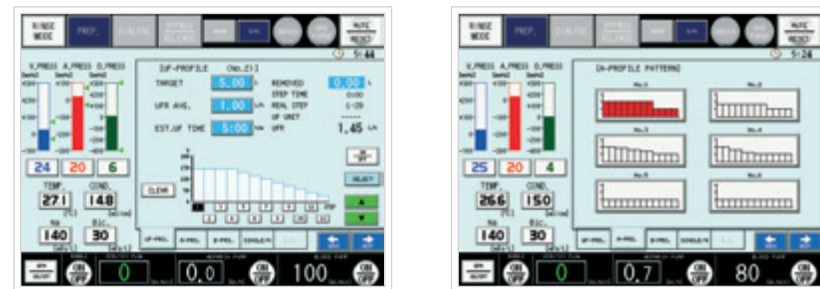
HEMODIALYSIS MACHINE



SURDIAL™ 55PLUS

HEMODIALYSIS MACHINE

- Dose Finder (Kt/V)
- Endotoxin filter
- Acid concentrates central delivery
- Fast preparation (8 minutes)
- Fast bicarbonate cartridge drain (55 seconds)
- Reduced disinfection time (~40%)
- External network connector



TREATMENT

Integrated treatment screens, designed to be easy to use. Treatment parameters can be changed via the touch panel.

DOSE FINDER

Kt/V prediction is available after 5 minutes of treatment, to ensure patient target will be achieved.

Parameters can be adjusted continuously to optimize the treatment.

PROFILING

Sodium, bicarbonate and UF profiles are built in features. When using profiling for sodium, bicarbonate and UF, 6 options can be stored and selected respectively.

SECURITY

Maintenance and conductivity settings have been protected by password to prevent accidental misoperation. The water and disinfection inlets are equipped with dual valves as standard. This redundancy offers extra protection.

RINSING

Most common rinse and disinfection methods are available. Various rinse programs can be set daily or weekly and Surdial 55Plus can automatically switch off.

Through continuous research Nipro aims at offering patients around the world the best renal care. Nipro is one of the largest manufacturers of dialyzers in the world, and knows as well the importance of the machine to obtain a successful treatment.

Nipro has a proud history of both challenging the technological limits and creating innovative solutions that improve renal care every day.

This means being continuously aware of the many challenges that dialysis clinics face today and in the future. Identifying these challenges and integrating them into our product design is part of our ongoing

commitment, to ensure we continue to answer all your clinical needs.

The Surdial 55Plus is an easy to use dialysis machine offering patients the best renal replacement therapy to increase their well being and quality of life.

It is a cost-efficient system that combines proven technology with new advanced features for improved treatment.

With its colour LCD touch screen, operating this machine is easy. The turnable and clear display gives you a perfect overview of your treatment data.

TECHNICAL SPECIFICATIONS

Dimension (w x d x h)	280 x 420 x 1365 mm	
Weight	± 72 kg	
Power Supply	AC 230 V/AC 110 V ±10% Max. Consumption 2000 VA Backup battery 30 minutes	
Water Supply	Temperature 17~30°C (4°C~30°C with Heat Exchanger) Pressure 0.05 MPa to 0.74 MPa Flow 900 mL/min Quality ISO 13959:2009	
Function	Acetate and Bicarbonate Dialysis Sequential UF Single Needle (Single Pump) UF & Conductivity Profile	Touch Screen Self-Check Dose Finder Blood detector
UF Control	Volumetric Control by Ceramic pump UF rate 0, 0.10 to 5.00 L/hr Accuracy ± 30 g/hr	
Conductivity Range	130 to 160 mEq/L (B: 5 to 65 mEq/L)	
Dialysis Flow Range (Qd)	300 to 800 mL/min (Max. 800 mL/min with factory option)	
Dialysate Temperature	32.0°C to 39.0°C	
Blood Pump Rate (Qb)	10 to 600 mL/min (8.00 x 12.00 mm tube) 10 to 300 mL/min (6.35 x 9.75 mm tube)	
Syringe Pump	Delivery Range 0 to 9.9 mL/hr Syringe Size 10, 20 and 30 mL Stop Program	
Bubble Detector	Ultrasonic Sensor min. 0.3 µL (at Qb = 200 mL/min)	
Venous Pressure Sensor	-500 to 500 mmHg	
Arterial Pressure Sensor	-500 to 500 mmHg	
Rinse Program	Water Rinse Chemical Rinse (disinfection) Acid Rinse	Hot Citric disinfection Auto Rinse programs
Blood Leak Detector	Optical Sensor	
Disinfection time	40 min	

OPTIONAL FEATURES

- Automatic blood pressure monitor
- Second disinfectant or acid connection
- Endotoxin dialysate filter
- Heat exchanger unit
- Bicarbonate powder cartridge system
- Central concentrate delivery
- Pedestal for dialysate concentrate solution
- External network
- Hook for dialysate bag
- Kt/V dose finder

Rotating touchscreen user interface

